

# Signpost



Issue 74 - March 2023  
Your Local Community News



This magazine is distributed free by your Parish Council to over 400 homes and businesses in the Langar and Barnstone Parish Council area. If you know anyone who would like to receive a copy via email or print please contact [langarbarnstoneclerk@gmail.com](mailto:langarbarnstoneclerk@gmail.com)



Invitation to the

# ANNUAL PARISH MEETING

from the Chairman of Langar cum Barnstone Parish Council

*(Please note this is not a Parish Council meeting)*

**Saturday, 15 April 2023, 10.30 am**

Langar Church of England Primary School

All residents and voluntary organisations are invited to attend the Annual Parish Meeting.  
Reports from organisations are welcome.

The meeting will include:

Chairman's Report for 2022-2023

Information on local groups, clubs and activities

A chance to find out about what's going on in our community

An opportunity to raise any matter of local interest you wish to be discussed

**Light refreshments will be provided**

For more details, contact Sharon Ellis, Parish Clerk:

T: 07984 075016

E: [langarbarnstoneclerk@gmail.com](mailto:langarbarnstoneclerk@gmail.com)

# PARISH COUNCIL REPORT

## Precept for 2023 - 2024

At its meeting in December, the Parish Council formally ratified the sum of £45,017 as its required budget (the 'precept') to provide parish services for the coming year. As ever, the guiding principles used in our discussions were those of trying to maintain support for the amenities and activities that contribute to our strong community spirit, whilst being aware of the need for financial restraint.

This budget requirement represents an increase of 6.7% on the previous year (the same percentage increase as last year), and this increase is driven by three elements: increased salary costs for our staff, increased costs for our external services, and increased interest rates.

## Taxi Voucher Scheme

This scheme, run by the Parish Council, provides vouchers towards the cost of taxi fares for residents in Langar and Barnstone with limited financial means who are unable to travel by public transport due to personal mobility problems or rural isolation. The scheme has been running for several years, during which time it has helped a number of residents.

Application to the scheme can be made at any time during the year. If your application is approved, a set of £5 vouchers will be given to you for use as part-payment towards the cost of your taxi fare. The vouchers can only be used with the participating taxi operator (Bingham Cabs).

Please be assured that all applications are considered in the strictest confidence. Further information and an application form may be obtained from the Parish Clerk (see below).

## Grants received

The Parish Council records, with grateful thanks, the following grants from our local borough and county councillors from their respective Divisional Funds: £531 from Cllr. Clarke for the memorial bench at Langar Airfield, £150 from Cllr. Combellack also for the memorial bench at Langar Airfield, and £335 from Cllr. Bailey to pay for the time capsule and towards the cost of the playpark fences.

## Dogs on the Field

A number of people are exercising their dogs on the community field at the bottom of Works Lane. The signs clearly state that this is a dog-free zone, and we ask that this be respected.

## Could YOU be a Parish Councillor?

Come April, the Parish Council will have vacancies for three councillors. Could you be one of these?

If you feel you can help to inform and guide the issues of interest to the local community, please get in touch, initially with the Parish Clerk (see below). No experience is necessary, and training is available. Go on, you know you want to!

For any matters relating to items mentioned here, or to raise any other issue with the Parish Council, please contact Sharon Ellis, our Parish Clerk, in the first instance

**T: 07984 075016**

**E: [langarbarnstoneclerk@gmail.com](mailto:langarbarnstoneclerk@gmail.com)**



## **Residents need photo ID to vote in person at the local elections**



Rushcliffe Borough Council is reminding residents to make sure they are registered to vote and have an accepted form of photo ID ready to show if voting in person at a polling station in this year's local elections.

The UK Government has introduced the requirement for voters to show photo ID when voting at a polling station at some elections and will apply for the first time in England at the polls on Thursday May 4.

The new legislation does not apply for residents who vote by post or proxy, with both forms of these voting methods verified in other ways.

Forms of acceptable photo ID which can be used to vote with include:

Passport

Driving licence (including provisional license)

Blue badge

Certain concessionary travel cards

Identity card with PASS mark (Proof of Age Standards Scheme)

Biometric Immigration document

Defence identity card

Certain national identity cards

Further information on which forms of photo ID will be accepted, is available on the Electoral Commission website at [electoralcommission.org.uk/voterID](https://electoralcommission.org.uk/voterID) or call their helpline on 0800 328 0280.

If individuals don't have any accepted form of photo ID, they can apply for a free voter ID document known as a Voter Authority Certificate.

To get a Voter Authority Certificate, residents can complete an online form at [gov.uk/apply-for-photo-id-to-vote](https://gov.uk/apply-for-photo-id-to-vote) or, complete a paper application form and send to Rushcliffe Borough Council's electoral services team.



The authority is now offering free in person support at their Customer Services sites across the Borough to assist residents in applying for a Voter Authority Certificate.

The Customer Service Centre on Gordon Road in West Bridgford is available during opening hours of Mondays and Thursdays 8.30am to 5pm and Fridays 8.30am to 4.30pm to help guide residents through the process.

Appointments are also available to complete the process in person at the Council's Customer Service contact points at Bingham, East Leake and Cotgrave.

Residents need to have their date of birth and national insurance number to hand and already be registered to vote before they arrive at any site.

To register to vote, residents can complete a quick and easy online form at [gov.uk/register-to-vote](https://gov.uk/register-to-vote). Alternatively, paper forms are available on the Government website.

Rushcliffe Borough Council's Returning Officer for the elections Katherine Marriott said: "We want to ensure all residents are aware of the new regulations for photo ID the UK Government has introduced.

"We urge everyone to be prepared and ensure they have a form of photo ID ready to bring with them if voting in person at a polling station at the upcoming local elections on Thursday May 4.

"It's absolutely vital that you bring photo ID with you otherwise, you won't be able to vote.

"If anyone is concerned they don't have any voter ID, please get in touch with us and we can help you get a free Voter Authority Certificate.

"Our Customer Services teams across the Borough are now on hand ready to help any residents with the online Voter Authority Certificate form.

"If anyone has any other questions about registering to vote or the new photo ID requirement, get in touch with our electoral registration team by emailing [elections@rushcliffe.gov.uk](mailto:elections@rushcliffe.gov.uk) or call 0115 981 9911."

For the latest news and events, follow [@rushcliffe on Twitter](#) or [Rushcliffe on Facebook](#) or go to [the council's website](#).

# Parish Council Elections 2023

Saturday May 6, the date for the Coronation of King Charles, is not the only important one for the month, because two days prior to the London event is election day for local parish and town councils, when local residents have the opportunity to take steps to become involved in the affairs of their area by putting their name forward for their local council.

The message for Thursday May 4 is 'Make a change, become a councillor,' with residents being asked if they are passionate about their community and want to help make a long-lasting change or have concerns about a specific issue and want to do something about it. The county-wide message going out to all residents aged 16 or over underlines the importance of getting people interested in the future of their parish and giving them an opportunity to have a say on the future of their area.

The message from the National Association of Local Councils is "If this is you, then we need you" saying there is a need for people from all backgrounds and experiences who reflect their community to put themselves forward for election. "Do you have innovative ideas for the council? Do you have concerns about a specific issue and want to do something about it? If this is you, then we need you. We need people from all backgrounds and experiences who reflect their community to put themselves forward for election. Make a change and become a councillor."

The Make A Change campaign encourages local councils to engage with as many residents from their community as possible and is aimed at helping improve local councils through various experiences, skills, and knowledge, and

help councils become representatives of their communities.

The Nottinghamshire Association of Local Councils is well aware of the need to make sure local residents are given the opportunity to consider being involved with their local council and secretary Tanya Grimes, says

"by becoming a Parish Councillor you become somebody your community will look to for help, guidance and support, and be a community leader with the power to influence decisions for the benefit of the people you serve."

"Seeing your community change for the better, as a result of decisions you have helped to make, is something that can give you a sense of achievement and pride".

Branch Chair for Nottinghamshire is Councillor Mick Baker, and he says "Parish Councils typically meet once a month discussing issues such as crime prevention, planning, local amenities like village halls, community support and managing open spaces. Why not talk to your local councillors and find out what they think about the role. If you are interested in becoming a councillor, the clerk to your local council can help you find the necessary forms and to fill them in."

Although the elections are not until May 4, nomination forms must be submitted to your District Council by 4pm on Tuesday 4<sup>th</sup> April so you don't have long to think about it. If you miss this deadline, you will have to wait 4 years for another opportunity unless a councillor resigns in the meantime or there are current vacancies.

**Don't wait: Make a Change NOW – become a Parish Councillor."**

# PLEASE .....COULD YOU DO SOMETHING FOR YOUR COMMUNITY?



There are many ways and places in which volunteers can offer their time and their talents, but we need more! Help others and you will be helping yourself. One of these ways is through your local church and there are probably lots of things you would enjoy helping with - even if you're not a regular churchgoer.

For example, could you help from time to time with:-

Church flower arranging

Church cleaning as part of our friendly team (the church is cleaned periodically and for special events)

Helping with catering – e.g. home baking for The Pop up Café

Helping others in the whole community

Helping with activities for children

Looking after local ecology and wildlife e.g. nest boxes for birds, bats etc.

Offering guidance on maintenance of the church building and churchyard

Ideas for enabling us to become more 'Green' and environmentally friendly

Bell ringing as part of an established team, beginners welcome

Becoming part of a small team which re-positions the church chairs before & after a wedding or funeral

Other activities using the church: it is a useful space, not just for church services

Maybe we missed something and you can think of your own ways to help. We welcome fresh ideas.

**ALL CHURCH ACTIVITIES ARE RUN TO HIGH STANDARDS OF SAFETY.**

The local church for Langar and Barnstone is St. Andrew's in Langar but other churches in the area will be glad to hear from you. Just get in touch and find out. Tell your friends and neighbours.

**To find out more, contact:**

**Trevor on 01949 860273 or 07799 068794, email**

**[trevor.simpson@wivertoninthevale.co.uk](mailto:trevor.simpson@wivertoninthevale.co.uk)**

**Wiverton in the Vale Church of England parish website:**

**<https://www.wivertoninthevale.co.uk/>  
Facebook: WivertonInTheVale**

Or just come along and meet us at the monthly Pop up Café in St. Andrew's, usually on the first Saturday each month.





**sharpes**  
— of —  
**nottingham**



*British & European Coach*  
**2023 HOLIDAYS**  
*that start from your doorstep*

**Day Trips Out.....**

*You'll love our day excursions programme*

**0115 9894466**

SCAN THE QR CODE  
FOR MORE DETAILS

Over 35  
Coach Holidays  
& Excursions to  
choose from







# Discover this beautiful, unique, family-run day nursery near Langar

Open 8.00am - 6.00pm Monday - Friday

**‘Millfield Babies’ now open!**

“Millfield is **exceptional, caring, attentive, fun, nurturing** and **wonderful**. The outside space is unbeatable, the activities are great fun and innovative, but most of all, the staff are caring, kind, enthusiastic, skilled and a privilege to know. I have absolutely no hesitation in recommending Millfield Nursery to any parents.”

**(Parental feedback)**

Visit us today and find out why Millfield is  
the best nursery for you and your child



**Millfield**  
Nursery School

Day Nursery & Preschool For Children Aged 2-5 Years

Tythby Road, Cropwell Butler  
Nottingham NG12 3AJ

**0115 9334085**

**[www.millfieldnurseryschool.co.uk](http://www.millfieldnurseryschool.co.uk)**



# Langar Conservation Area Appraisal and Management Plan Review 2023

Local Planning Authorities have a legal duty to designate as Conservation Areas any areas of special historic or architectural interest, the character or appearance of which is desirable to preserve or enhance. Rushcliffe Borough Council is currently reviewing the conservation plans for the borough to ensure they are up to date and relevant. The current appraisal for Langar dates from 2009. The two illustrations are a map of the current conservation area outlined with a red line and an explanation of the permissions required for any work on a property in a conservation area.

The aim of the review is to ensure it describes Langar as it is today and to identify the special character and distinctiveness of its setting, buildings and open spaces. Following a request from Langar cum Barnstone Parish Council and under the guidance of

Andrew Langley, Project Officer - Conservation Area Review, a group of Langar residents will be critically assessing the Langar Conservation Area Appraisal and Management Plan Review 2009 and updating it by correcting any errors, including any changes and adding new information. The group will report on progress and consult with residents at an open session on a date yet to be decided in addition to consulting with and keeping the Parish Council up to date on progress.

A first meeting of the group took place in January with Andrew Langley to understand what is required and agree on an action plan.

The aim is to complete the review by the end of July 2023.

For information there is no equivalent Conservation Area for Barnstone.

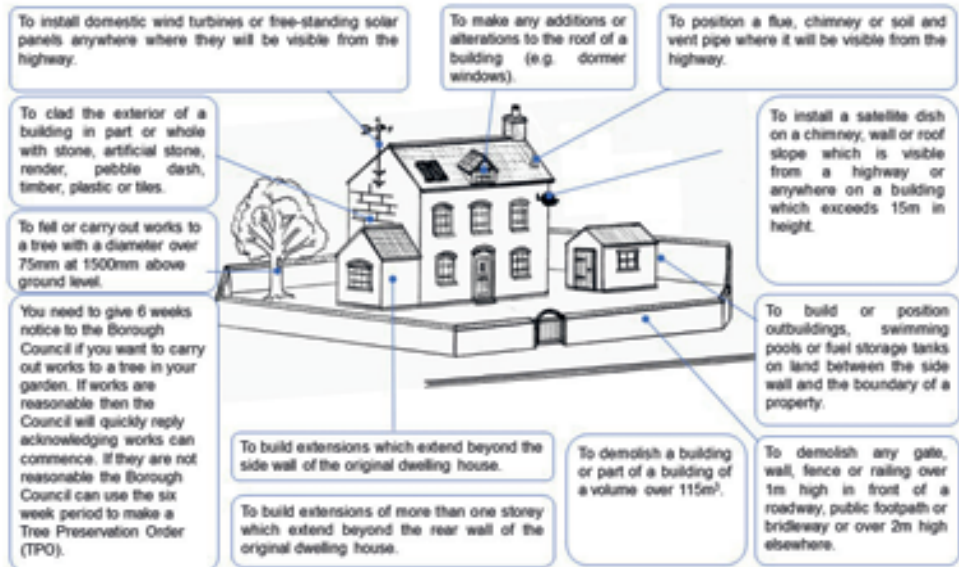
**If anyone would like to join the group or has any questions about the review please contact Nigel Wood (01949 860001 or [nibarwood@btinternet.com](mailto:nibarwood@btinternet.com)).**



OFFICIAL  
**Works within conservation areas that require permission**

This diagram illustrates examples of extra consents required in Conservation Areas. If in any doubt over any consent which may be required, please contact Planning and Place Shaping.

In addition to general control of development, you will need permission for the following:



## **Gary Smith**

### **Building Contractor**

All types of building work  
Undertaken from pointing a  
Chimney to building a house.

Extensions & Alterations a  
Speciality.

All domestic Joinery, Brickwork  
and Plastering.

**CALL FOR A FREE ESTIMATE**

8 Main Street, Harby

Phone: **01949 860474**

Email: [info@gcsmith-builder.co.uk](mailto:info@gcsmith-builder.co.uk)

**See us on the web at [www.gcsmith-builder.co.uk](http://www.gcsmith-builder.co.uk)**

## Time to get walking again!

With Spring on its way we start to think about getting out to walk in the beautiful English countryside again, but where to find new and interesting walks? Walking in Nottinghamshire <https://www.walkinginengland.co.uk/notts> has loads of walks to download and print, free of charge; it also has books of walks, details of all the walking groups in the county and much more. Whether you want to walk on your own or with a group all the information is there in one place.

John Harris (who maintains the website) said 'There is so much walking information on the web but it is

difficult to find. Walking in Nottinghamshire (part of the Walking in England website) has brought it together in one place so whether you are walking from home, or away on holiday, you will be able to find a walk suitable for you'.

With walks from half a mile to twelve miles plus long, and a note of suitability for pushchairs and wheelchairs, everyone can find a walk to enjoy.

So home or away, check out the websites and get walking!

John Harris  
[www.walkinginengland.co.uk](http://www.walkinginengland.co.uk)  
[john@walkinginengland.co.uk](mailto:john@walkinginengland.co.uk)

# HARLEQUIN OSTEOPATHY

Tel: 0115 933 5797



*"Rarely do patients require more than one, two or three treatments"*

Back/Neck Pain, Shoulder/Elbow Pain, Hip/Knee Pain, Wrist/Hand Pain, Ankle/Foot Pain. Harlequin Osteopathy is the location for treatment and honest advice to aid your recovery. No outlandish claims, no long drawn out treatment plans, no pressure, no gimmicks.

I will help you, help yourself.

Don't suffer any longer, call Graham Miller today.

Acupuncture ❖  
Osteopathy ❖  
Massage ❖  
Taping ❖



❖ Examination  
❖ Treatment  
❖ Diagnosis  
❖ Rehab

6 Thomas Avenue, Radcliffe-on-Trent, NG12 2HT



## VALE ARTS GROUP THE YEAR 2022 AND AGM

A year out into the open and Covid almost a distant memory, although we do know that it will never go away.

2022: Membership rose to the dizzying heights of 25 members!

In March we had Peter Milward come and tell us how to do CHINESE BRUSH PAINTING. The turnout was small, but we had a good afternoon the six of us. Some light information - Chinese only use six characters to do their paintings!

We held an Exhibition in June and sadly it was poorly attended due to the absolutely foul weather that day, the rain tipped down throughout and so footfall was very poor.

The Group venue has changed during the rebuild of Langar cum Barnstone Hall. At a Parish Council meeting last May, everyone who used the Hall was told we had to be out by the 1<sup>st</sup> September. A goodly number of members came along to help clear out our cupboard and take temporary custody of some of our assets.

We now had to find somewhere for the Group, because as we hold meetings on Tuesday afternoons we could not use the Langar School Hall. I got hold of Niki Heath at Tarmac, as we had used their premises right back at the beginning of Vale Arts Group, to house some of our Art at the Village Fair. The answer was **YES!** we could use it again. And so we moved into their Conference Room. Many thanks Tarmac for your generosity.

Sharing a table as opposed to having a table to ourselves, well, we have got used to it and we are managing fine and are looking at configuring the tables in the new hall in a like manner

Sadly we lost our lacemaker and watercolour artist Eve Corrall. A member who will be missed for her cheerful ways and great sense of humour.

Julie Powell came and gave us a demonstration on Pen and Ink in November, which was very interesting and we learnt how to do cross hatching, which emphasises the picture colour very well. Thanks Julie see you again sometime.

Christmas coming and a social was to be held – but! The Unicorn's Head at Langar the most obvious place was not to be! The Nag's Head at Harby was the next choice and apart from Sylvia who had pulled a muscle in her back, we had fifteen people come along. A great success! The food provided was great and we all had a doggy bag takeaway! Thank you very much The Nag's Head!

2022 has now gone, it is the end of January 2023 and our Annual General Meeting. Eight years on and we are really doing very well.

Annual Subs remain at £1, yes one pound, and the session fee with tea/coffee and biscuits included £2.

**FOR FURTHER INFORMATION  
PLEASE CONTACT:**

**GILLIAN CLARKE – 01949748288 or  
philigansgc@gmail.com.**



## **Inside Local Businesses**

In late 2022 Langar cum Barnstone Parish Council agreed to demolish the old village hall and rebuild a new one. The council was then faced with a dilemma regarding where to store all the furniture and fittings that would be needed for the new village hall when it was completed. The groups which frequent the village hall all volunteered to take their personal equipment away to store themselves, however there was still a large amount of equipment which would be required in the future that needed safe, clean storage. Luckily, a local business, who are regular readers of Signpost, volunteered to look after the equipment until the new hall was completed, so we decided that it would be intriguing to find out more about the company.

### **Rock Civil Engineering**

Rock Civil Engineering is a privately owned company which was established in 2009 by Mr Mick Kane. It was originally a Groundworks Contractor and was based on the edge of Langar airfield.

The business expanded into a full Civil Engineering Company, and it moved to the Langar Industrial Estate about nine years ago. It is now managed by Mick Kane and his wife Kelly, plus his son Conor and daughter Kat. There are approximately 160 other staff based in Langar/Barnstone. These include office staff such as accountants, quantity surveyors, estimators etc. There is also a machine management team with plant fitters, mechanics, and drivers along with specialist machine operators. A further workforce is based at their various sites around the country.

### **History of Langar Industrial Estate**

Originally farmland, the industrial estate, which is positioned halfway between Langar and Barnstone, was established in the 1920s as a sawmill and wheelwrights by farmers Clark and sons.

Over the years the estate has had various uses. The main use which expanded the estate was Britannia Stone Precast which occupied the estate until about 2008. The site was then split into various small businesses such as a log man, bakers, delicatessen and builders' merchant until the site was purchased outright by Rock Civil Engineering.



## What is a Civil Engineering Company?

When a developer decides to develop a piece of land, either as a domestic housing development or as an industrial area, their plans need to consider what needs to be done to the actual ground they are going to develop.

Civil engineers draw up plans to initially clear earthworks and then, working with planners, local authorities, environmental teams, water authorities and service suppliers, such as electricity, gas and water etc, they will plan out road and drainage systems for the site.

They will need to take account of current drainage, open space requirements, and attenuation ponds etc. to plan how to manage storm waters for potential 5-year, 30-year and even 100-year possible events. When all the systems are approved, the developer then places a contract with the Civil Engineers to complete the initial works prior to starting to build.

## Rock Civil Engineering's System

Rock Civil Engineering works around the Midlands, South Yorkshire, Northampton and many other areas with several developers such as Stata Homes, Gleeson Homes, Keepmoat Homes and Orbit Homes, to name but a few.

Their Commercial Director, John Elms, explained how tender documents are received from the building site developers, and then their quantity surveyors and estimators work on site plans to develop a quotation for carrying out the work.

The business is very competitive, usually with at least three competitors competing for the same work. Once they are told that they have been successful they then move on to the next stage.

## On Site Operations

The company owns over 100 different machines such as: Excavators from 3 ton up to 40 ton, Dump trucks 3 ton to 3 ton, Bulldozers, Tractors and Trailers and Pipe Layers which can handle pipes with diameters ranging from 15cm to 3.6m.



Lime Stabilization machines are used to turn onsite materials, such as removed soil, into solid materials to be reused on site instead of being sent into landfill.

They have a very special large loader which transports machines from site to site, so they rarely need to bring machines back to Barnstone, other than for repair in the workshop manned by specialist mechanics.

The company also owns its own building material supplier which is based in Ilkeston, and it delivers materials straight to site for the groundworks, saving on transport.



Wherever possible material and machinery are purchased in the local region, and the company has a special working relationships with material and machinery manufacturers.

It's amazing that such a successful business as Rock Civil Engineering, which employs over 160 people with many skills and abilities, is based here in Langar/Barnstone.

**Cllr John Crosby**  
**[cllrcrosbylbpc@gmail.com](mailto:cllrcrosbylbpc@gmail.com)**

# A PERSONALISED PRIMARY EDUCATION FOR YOUR CHILD

Our small class sizes are invaluable to every child's education.

Pupils' personal development and behaviour are outstanding. OFSTED



Pupils gain success in their 11+ examinations and move on successfully to schools of their choice. OFSTED

DON'T DELAY YOUR CHILD'S EDUCATION  
ANY LONGER. CALL 01949 81118.

**Colston Bassett Preparatory School**

School Lane, Colston Bassett, Nottingham NG12 3FD

[www.colstonbassettschool.com](http://www.colstonbassettschool.com)



## The Hogs of Langer cum Barnstone

Last year I was out in my garden in Barnstone and heard something shuffling under the covering over our bikes. Slightly nervously, I looked under it, and found a hedgehog. Completely



baffled as to how they were getting in my garden, I quickly put out some

food and water and set up my wildlife camera. It turns out they could squeeze under our gate, and very quickly I was feeding up to seven hedgehogs a night!

They're such endearing creatures, snuffling around in the evening, watching them on my camera brings me so much joy. However, with joy came the sadness of seeing them

squashed on our roads, and drove me (excuse



the pun) to doing something about it. Joined by two others, we established the 'Vale Hedgehog Array'. A grassroots community group based in Langer cum Barnstone, we hope to raise awareness and encourage hog-friendly practices to help our prickly friends.

A recent report from the People's Trust for Endangered Species showed that rural hogs are doing much worse than their urban counterparts. In rural areas the declines are between 30% - 75%. The report states that the decline

reasons are complex, but pressures of reduced suitable habitat and fragmenting their homes with fencing are recorded as key players.

We've been inspired by the work of Wild Things, a community group in Keyworth who recently won a national award for the largest hedgehog street in the UK, who recommended we offer garden visits. Help us to target these key drivers in hog decline and email us at [valehedgehogs@gmail.com](mailto:valehedgehogs@gmail.com) for a garden visit, to see how you can make your space more hog friendly! We're also on Facebook for hints and tips throughout the seasons at 'Vale Hedgehog Array'.

Things to consider are; leaving a 13cm square hole in your fencing or gates to allow hogs

in, leaving patches of leaves or log piles for them to make



homes and find food, make your pond safe with a ramp so they can get out, removing netting and litter they could get stuck in, check before strimming or lighting bonfires, and finally and importantly, put out water and food (hedgehog food or cat biscuits, please **do not** put out bread, milk or mealworms - they make them poorly).

Hedgehogs are amazing, unique creatures that pull the funniest of faces, they also lift their spiny 'skirts' to aid their long legs when they run, seeing them in your garden will certainly bring a smile to your face.



Rebecca Gosling

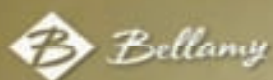




**HEDGEHOG HIGHWAYS**

Help us create hedgehog access and habitats in gardens in Langar and Barnstone!

Contact us to arrange your garden assessment  
[valehedgehogs@gmail.com](mailto:valehedgehogs@gmail.com)



*Wedding*  
 CAR HIRE



Please contact  
**Adrian Bellamy**  
 07980 700007  
[adrian@bellamys.me.uk](mailto:adrian@bellamys.me.uk)







## **‘What a Difference a Frame Makes’**

**Local bespoke  
picture framing service**

Between Harby & Colston Bassett

Call Jo to arrange a visit to our  
workshop:

**07952 909189**

Email: [jo@penhills.co.uk](mailto:jo@penhills.co.uk)

## **Andrew Atkin Plumbing & Heating**

**SAVE GAS!  
GET YOUR BOILER  
SERVICED NOW  
FROM £65**



**IDEAL SERVICE ENGINEER • IDEAL TRAINING  
• SAME DAY BREAKDOWN SERVICE**



Call Andrew: 07846 206688

Email: [atkinandrew385@gmail.com](mailto:atkinandrew385@gmail.com)



## **Walking Football**

**Walking Football at Bingham leisure Centre on  
Wednesday nights at 7pm**

**Aimed at over 50s, it's a non serious, non tackling  
fun hour which tends to veer into trotting!**

**All new players are welcome**

**Please contact me if interested**

**Shaun 07800 761557**



# GO2 LOGISTICS



- 12T 'agile & accessible' tipper grab truck available
- Specialising in smaller loads & limited access locations
- Serving trade and retail sectors
- Provision / collection of self fill bulk bags for a wide variety of waste
- Smaller grab / tipper for waste removal up to 4T
- Supply of small quantities of loose aggregates, soils and compost

# 07980 700007

e: [enquiries@GO2van.uk](mailto:enquiries@GO2van.uk) w: [GO2van.uk](http://GO2van.uk)

# TIPPER G



VEHICLES TO SUIT ANY QU

**SMK** HAULAGE



# GRAB HIRE



ANY QUANTITY IN ANY LOCATION

IN  
PARTNERSHIP  
WITH

**GO2**  
LOGISTICS

# SMKK HAULAGE



- 32T tipper grab trucks available
- Specialising in large load requirements
- Serving trade and retail sectors
- Haulage of bulk materials
- Large grab / tippers for bulk waste removal up to 17T
- Supply of large loose quantities of aggregates, soils and compost

**07970 763322**

**e: [grab@smkltd.co.uk](mailto:grab@smkltd.co.uk)    [www.smkltd.co.uk](http://www.smkltd.co.uk)**





# Digby & Finch

ESTATE AGENTS

## SPRING VALUATION EVENT

17TH- 30TH APRIL 2023



Looking to sell or just curious about your home's current value?  
We invite you to take part in our spring valuation event.

[DIGBYANDFINCH.COM](https://digbyandfinch.com)

01159 505 444

[nottingham@digbyandfinch.com](mailto:nottingham@digbyandfinch.com)

## 1st Barnstone Brownies

Spring term has seen our numbers drop to 18 since the oldest girls left us at Christmas - 4 of them joining Guides. Any 7 year old girls out there? Come and join us!

The Church is still our home at the moment and we are making the most of its indoor space whilst looking forward to the outside area on the Green as soon as the weather allows it.

So far we've done some stargazing and had our own Chinese New Year with Dragon dancing and fortune cookies. For 'Women in Sport' Day we did some keep fit, played team games and had a crazy golf course in the Church!

February 22nd is always a Special Day for us when we remember Leaders, Rangers, Guides, Brownies, Rainbows all over the World, including Scouts, Cubs and Beavers too.

We took part in a joint event in Radcliffe-on-Trent with all the other Units in our District, over 200 of us. There were



many activities and at the end we all sang together and lit candles. Next term we'll be joining in again with everyone at the Sherbrooke Scout site in Calverton for 'Too Cool for School' activities.

Thank you to the volunteers who have helped us this term. We can't function without you. We need more of you! Once again, any girls between 7 and 10 who would like to join will be made very welcome.

Best wishes

**The Owls and the Brownies**  
**Brown Owl (01949 860022)**  
**Tawny Owl (01949 861181)**

## Social Walking Group Spring 2023



We are once again very much looking forward to our new season of evening walks.

Apart from a few hiccups, we have been walking, in various formats, for about 11 years.... how time flies! It's a great way to reconnect with nature and catch up with friends, old and new.

Everyone is welcome on the walks which take place in lovely villages local to Langer & Barnstone at 6.45pm one

evening per week between April and September.

Each walk is approx. 2-3 miles long and details such as location and transport (and weather!) are confirmed by Whatsapp message in advance. The first walk will be a circular of about 2.5 miles around Barnstone and Langer on Thursday 30<sup>th</sup> March, setting off from Park Road, Barnstone at 6.45pm. Future locations, and regular favourites, will include Aslockton, Harby, Muston and Kinoulton.

Please contact Claire Pegg at [claire.pegg!@Gmail.com](mailto:claire.pegg!@Gmail.com) for more information.

## CONTACT US

---



01949 850233



manager@aslocktonhall.com



www.aslocktonhall.com



Aslockton Hall  
New Lane  
Aslockton  
Nottinghamshire  
NG13 9AH

## OUR CARE PROMISE

---

- Nursing care 24/7
- Electronic care planning
- Person centred care
- Families welcome
- Short stay respite
- 6 Week Care Packages

## SERVICES

---

- Home cooked meals
- Religious services
- GP Round
- Activities
- Regular entertainment
- Arts and crafts
- Hairdresser & Chiropodist

## ASLOCKTON HALL PRIVATE NURSING HOME

### NURSING, CARE & RESPITE



## HAPPY DAYS & NEW BEGINNINGS

---

This month we have been celebrating some wonderful birthdays and new arrivals, which requires a lot of tea & cake! Personal milestones are celebrated by everyone at the home & made special in so many ways.

We are exceptionally proud to welcome our new Home Manager Emily. Emily brings with her a solid background in care management which will compliment and enhance the magnificent nursing & care team already in place here.

For anyone interested in knowing more about care for a loved one, short or long term, then we would love to meet you and have the opportunity to show you around our beautiful home. If you are looking for a place to stay following a hospital visit or after an illness, we are here to help. You might be eligible for funding for your care & this is something we can help with.

# The Village Hall Rebuild

## December 2022

The first stages of the rebuild after demolition and removal of the old building was the preservation of the groundworks ready for the new building. The building layout was marked out and a number of loads of soil were removed, leaving room for the installation of the footings and positioning the supports ready for the installation of the steelworks.



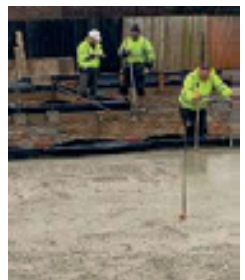
## January 2023

The beginning of the installation of the steelworks



## February 2023

Laying the concrete floor





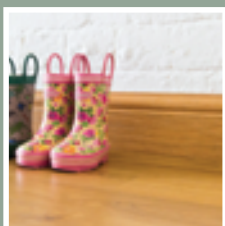
# husqui



**CLADDING**



**DECKING**



**SKIRTING**

**5%  
OFF**  
USE CODE  
'SIGNPOST23'  
ONLINE

Environmentally friendly composite decking & cladding boards, recycled PS skirting boards, DIY and installation accessories for your projects.

A friendly, family-owned company based in Langar.

Free local delivery for Signpost readers on orders over £100.

w: [husqui.com](http://husqui.com) e: [sales@husqui.com](mailto:sales@husqui.com)





It's been a while since we last published so we thought we would give some history into the site and a quick lesson on how cement is made.

## WHY IS THERE A CEMENT PLANT IN BARNSTONE?

Until 2006 cement was manufactured at Barnstone. But why did the original company – back in 1864 – choose to build a cement plant in Barnstone? The reason for this site being chosen is all down to the local rock – a special limestone called Blue Lias which has been around since Jurassic times.



*"The Blue Lias has outcrops stretching across the middle of England from the Dorset coast to the Cleveland Hills in Yorkshire. It also forms much of the Vale of Glamorgan, and there is a small outlier in the Cheshire Basin. It occurs under the Irish Sea. ... The blue colour derives from pyrite."*

## SO - HOW DO WE MAKE CEMENT?

## A SIMPLE GUIDE

## It's like baking a cake



**STEP 1:** Prepare ingredients (Lime, Stone, Shale, Clay)

## STEP 2: Cook Ingredients

**STEP 3:** Mix with Gypsum and package cement

Once ingredients have been mixed, we can pack in bags and send out to our customers. IT'S THAT SIMPLE!



Finally, as a plant our local community and our relationship with you is very important to us. We continue to take our duties as a responsible neighbour to you very seriously, please don't hesitate to contact us directly here at the plant if you have any queries or concerns. We always welcome your feedback.

We wish you all a happy, healthy and safe few months moving forward into spring and summer.

## The Barnstone Team at Tarmac

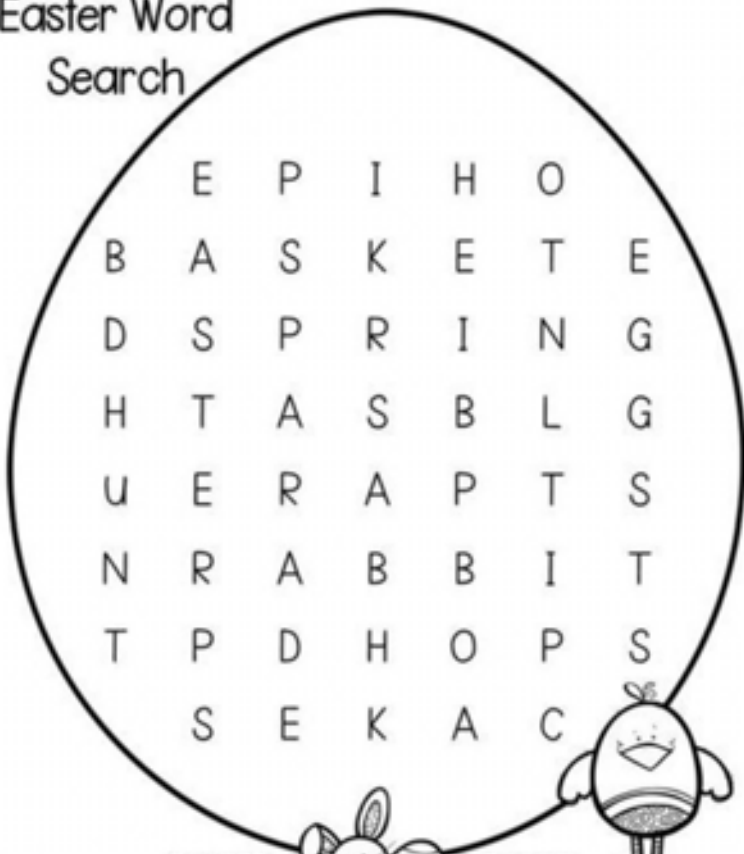
## TARMAC COMPETITION TIME

ONE FOR THE CHILDREN - WHO WOULD LIKE TO WIN AN EASTER EGG?  
WE HAVE 3 UP FOR GRABS!

COMPLETE THE WORD SEARCH BELOW AND THE FIRST 3 TO COME TO  
RECEPTION WITH THEIR COMPLETED WORD SEARCHES WILL GET THE  
EGGS.

COME INTO THE RECEPTION AREA AT TARMAC ON WORKS LANE, FROM  
MONDAY TO FRIDAY BETWEEN 8AM AND 3.30PM AND SEE NIKI HEATH TO  
CLAIM YOUR EGG.

### Easter Word Search



EASTER  
EGGS  
BASKET  
CAKE



RABBIT  
SPRING  
HUNT  
HOPS



# SUCCESSFULLY SELLING IN YOUR AREA FOR OVER 33 YEARS



[www.richardwatkinson.co.uk](http://www.richardwatkinson.co.uk)



Having been established for over 33 years, Richard Watkinson & Partners is a family run business that has developed a reputation which we have worked hard to maintain. We are renowned for being trustworthy, efficient and providing an excellent level of customer service.

Our residential valuer and negotiators live locally with the majority of us having lived in the area most of our lives and we are therefore able to provide expert advice, taking sellers from initial market appraisals all the way through to a successful sale.

Our Bingham Office is proud to be the only local agent chosen as a member of the prestigious Guild of Property Professionals linking the best of the best with over 800 estate agents which is a landmark achievement in our agency's history and is a true testament to the hard work and dedication shown by the Richard Watkinson & Partners staff.



We also have a satellite branch in Bottesford which enhances coverage within the village and surrounding areas.

If you are thinking of selling or letting your property and would like some expert advice on the current market conditions, call us today for a free, up-to-date market appraisal.

If you have already instructed an agent on a sole agency basis, please check the terms and conditions in order to avoid potential liability of having to pay two fees.

SCAN ME TO  
FIND OUT MORE



Bingham Office, 10 Market Street,  
Bingham NG13 8AB

**01949 836678**

[bingham@richardwatkinson.co.uk](mailto:bingham@richardwatkinson.co.uk)

Bottesford Office, 12 High Street,  
Bottesford NG13 0AA

**01949 240031**

[bottesford@richardwatkinson.co.uk](mailto:bottesford@richardwatkinson.co.uk)



## Belvoir Archers

Over the winter, Belvoir Archers have been outdoor shooting on Saturday mornings. We have also been shooting at the Langar Skydive. We are very grateful that they have been able to accommodate us while the new Village Hall is being constructed.

We held our Winter Windsor on 16<sup>th</sup> September. The weather was a mix of sun, rain wind and calm. We had several archers taking part using all types of bows including cross bows. Several Belvoir Archers came within the medals.



Several of our members took part in the World Crossbow Indoor Championship. Congratulations to Sue Haynes for becoming Ladies' Senior Target Crossbow World Champion. Bryan Haynes was 4<sup>th</sup> and he came third in the Team competition. Tony Drabble was 6<sup>th</sup>.

The World Crossbow Rankings for 2022 have just been released. Three Belvoir archers have received rankings for both indoor and outdoor Crossbow. Bryan Haynes came 2<sup>nd</sup> Indoor Crossbow and 3<sup>rd</sup> Outdoor Crossbow.



On Boxing Day Belvoir Archers held their yearly shoot. It was 3 dozen arrows at 30 metres. It was a lovely bright boxing day, getting breezy towards the end of the shoot. All bow types took part (Crossbows, Recurve, Longbow, Barebow and Compound)

As Spring comes, you will start to see more of the Archers shooting on our club nights. We have several tournaments scheduled for the summer months and we are putting on a beginners' course.

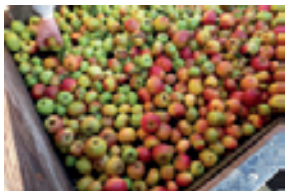
We will also be holding a 'have a go' session at the Dove Cottage Fete in May .

If you are interested in trying archery or wish to have a go, please contact us ..... it is very addictive.

More information can be found on our web page [www.belvoirarchers.co.uk](http://www.belvoirarchers.co.uk) or email us on [coaching@belvoirarchers.co.uk](mailto:coaching@belvoirarchers.co.uk)

## Divisional Fund Support Ensures a 2023 Community Apple Day

After a two year hiatus, apple day returned to Langar and Barnstone in October last year. The event, which was held in the Langar school car park, was a wonderful multi-generational event, which welcomed school families and residents from across the two villages.



We were also pleased to be able to lend the equipment out to a few local residents in the run up to apple day, enabling them to press their fruit at home.

Getting the equipment out after two years of limited use, it was found that a couple of the parts on the 20 litre cross beam apple press had perished, including the spindle which had threaded, and some of the sundries such as flexi tubs and fermenting buckets had split.



We approached Councillor Neil Clarke for help with financing the replacement part and equipment and are pleased to have received a contribution from his divisional fund which will cover the cost.

Thanks to this support we will be able to lend out the equipment to locals in the autumn for a small donation and hold our annual apple day event, in October.



Until then we want to thank the school for hosting our last event, the wonderful volunteers who helped out on the day, local residents and Cropwell Bishop Allotment group for donating apples and Olly Petchell for collecting the apple pulp which went off to feed the anaerobic digester at Barnstone.



If you would like to get involved in this year's event, fancy setting up a cider making club or have any other abundance ideas you would like to share! Please do get in touch, we would love to hear from you.

Jodi and Claire

You can contact either of us by email or phone as follows:

Jodi in Langar -  
[jcarterdavies@gmail.com](mailto:jcarterdavies@gmail.com) / 869794

Claire in Barnstone -  
[claire.pegg1@gmail.com](mailto:claire.pegg1@gmail.com) / 861181



## Calling all residents in Langar and Barnstone!



My name is Jodi and I live in Langar. Through my job with Rural Community Action Nottinghamshire ('RCAN'), I have been participating in the Soil Association's 'My Food Community Leadership Programme' and as part of this involvement I have been successful in obtaining a grant of £500 to spend on a good food project within our community.

I want to find out if there is a need and/or wish to set up a food resilience and wellbeing working group within the community. This was the focus in my application for the grant. Ultimately, the project would aim to improve residents' health, environment and wellbeing as well as supporting our community's journey to 'net zero'.

I am consulting with residents and local community groups to find out if you would welcome the chance to develop this idea and, if so, we could highlight some areas that we would all like to focus on. I am interested in hearing your suggestions.

To start the ball rolling and based on our locality, the following are some of the suggestions that have been put forward so far:

- Land share or community garden - lots of properties with big gardens, elderly residents, possibility for sharing vegetable plots. Limited allotments available in the villages
- Food waste composting scheme - potential of utilising local draft horses to collect and transport waste
- Explore native edibles and growing schemes
- Abundance Scheme - share surplus fruit and vegetables - expansion of community apple press and apple day
- Community cook up - cook, learn and share - opportunity to share knowledge and skills whilst hosting a community meal
- Explore a non kerbside recycling collection, a quarterly repair cafe and a seed and plant swap
- Development of Parish Council website to include information and signposting on local renewable energy suppliers, lists of local food growers and suppliers, information on recycling.
- Local producers purchase and distribution scheme - expansion of bread distribution scheme during lockdown
- Village events calendar which reintroduces old village traditions - Harvest Festival/May Day/Wassailing etc.

I hope this explains what I am looking to achieve. I would really welcome your input so please do get in touch to share your ideas and let me know if you would be interested in forming a working group. It would be lovely to hear from you.

**Jodi Carter-Davies**  
**Chestnut Farmhouse,**  
**Main Street, Langar**



## **GRANBY, BARNSTONE AND DISTRICT BRANCH**

The 2022 Poppy Appeal was very successful. The Branch managed to raise £4147, which will be used nationally to help disabled or destitute ex-service personnel and their families. We wish to thank all members of our community who contributed to this fundraising event. It is, as always, very much appreciated.

On Sunday 23<sup>rd</sup> April members of the Branch will be attending the unveiling ceremony of a statue of a WW2 airman and his dog at the former RAF Newton. The sketch on which the

statue has been designed was produced by local artist Tim O'Brien, who is well known for his outstanding paintings of aircraft from WW2. The unveiling of the statue will be made by our Branch president Sir Andrew Pulford.

On Saturday 13<sup>th</sup> May members of the Branch will be attending a memorial event at the 207 Squadron memorial at Langar Airfield to mark the 80<sup>th</sup> anniversary of the loss of a Lancaster bomber whose crew included some local men. There will be a fly past from the Lancaster to mark this occasion (times to be confirmed)

The memorial site is being refurbished by Langar cum Barnstone Parish Council, who also look after the site.

**Andrew Charlett**  
**Branch Chairman**

## **Community Speed Watch**

This scheme involves members of the public being trained by police to assist with vehicle speed radar checks and has recently been revised to make it less onerous.

The Parish Council is interested in getting involved and would like to gauge the level of interest in it. Any residents who might be interested in training for, and taking part in, the community speed watch scheme alongside Councillors should contact the Clerk.

**Sharon Ellis [langarbarnstoneclerk@gmail.com](mailto:langarbarnstoneclerk@gmail.com) 07984 075016**

**Acceptance of advertising does not imply endorsements by  
Langar cum Barnstone Parish Council**

# Hollygate Upholstery Curtains & Blinds Ltd



We offer antique and modern reupholstery. From unique projects to your favorite comfy sofa, chairs and dining chairs. With bespoke headboards & banquet seating for all in home requirements. We also Upholster contract seating that we have worked within local pubs, football clubs and British legends. We also work closely with a french polisher to update the wood work on your loved items.



We also offer a full in house service of curtains, blinds & shutters made to measure from our trusted makers and suppliers.



Please feel free to drop in to take a look in our fabric room.

Hollygate Upholstery Curtains & Blinds Ltd Ranch House, Chapel Lane, Bingham, NG13 8GF [hollygateupholstery@gmail.com](mailto:hollygateupholstery@gmail.com) 01949 838037 07385097652



# COUNCILLOR'S NEWS

## LETTER SPRING 2023

For Langar, Colston Bassett, Hickling,  
Kinoulton, Hickling Pastures and  
Upper Broughton

From **Cllr Tina Combella**  
[Cllr.tcombella@Rushcliffe.gov.uk](mailto:Cllr.tcombella@Rushcliffe.gov.uk)

### Rushcliffe Community Funds

Shared amongst the villages, memorial bench in Langar, interpretation board in Colston Bassett, computer in Upper Broughton, play equipment in Hickling, and reading books in Kinoulton.



### Monster Phonics

As a former Literacy volunteer I was delighted to help fund Phonics reading books for Kinoulton school and see how they helped the young readers when I visited.

### Springer

More fun for the children of Hickling now they have a new 'froggy springer' in their Walker's Green play area.



### History Chest

What a find – Upper Broughton have unearthed a chest full of very old and historic records that are being uploaded to their History Web site. I was thrilled, loving the history of villages, to offer a grant from my Community fund to help. Sadly I have to tell you that the Councillors have had their funding

halved in order to help protect front line services at Rushcliffe. I have helped with so many worthwhile community requests in the past.

### Trees

Rushcliffe has now planted over 11,000 trees throughout the Borough but, as I keep saying, 'we have to look after the trees', those already planted, but particularly the young ones. Water is vital in those early years. Perhaps residents could adopt a tree in their area to look after, particularly in hot, dry summers – just a thought.

**Plant More Trees** is the message from Woodland Trust. 'They're one of our best defences against the climate crisis, our vital emergency response that helps to lock up carbon and keep our planet healthy for people and wildlife'.

### Coronation Wood

A resident of Kinoulton is planning to plant a 5 acre Coronation Wood with 2/3000 Native broadleaf, fruit and conifer trees, part of the Greenwood, Trees for Climate Scheme.

### Ivy – Friend or Foe?

Unfortunately this stately tree came down in high winds recently. The canopy had become burdened with Ivy which caught the wind. It is permitted to cut ivy away from the tree at a convenient point, usually at the base, not killing the ivy but pruning it.



### Rushcliffe Council Tax

To remain the same for bands A-D .  
D+ will see a 2% increase.



## **Rural Crime**

We held a meeting with farmers and landowners plus police and the Borough Council at Oddhouse Farm, Owthorpe. The police set out their plans for monitoring Rural Crime. Mobile CCTV cameras have been set up to monitor Anti Social behaviour helping keep streets safer but will also help in tracking suspicious vehicles providing on-going intelligence. Remember to report any suspicious vehicle or incident no matter how minor on 999 or 101. It may be part of a pattern.

The Neighbourhood Officers are committed to visiting all farmers in the area over the course of the coming months to talk about security and concerns regarding criminal activity. To keep up to date with safety advice and crime in your area go to [alert@neighbourhoodalert.co.uk](mailto:alert@neighbourhoodalert.co.uk) and sign up to Rushcliffe Farm Watch to view and publicise suspicious activity **BUT STILL REPORT ON 999 or 101. If you wish to join Farm Watch contact Jo McQuat on 07790846111**

## **Fly Tipping**

Since the Borough have engaged 'WISE' we have increased enforcement notices to 3000, brought prosecutions and crushed vehicles.

The WISE contract - 'Waste Investigations Support & Enforcement (WISE) will provide Environmental Enforcement Services with regards to the investigation of all submitted dumped waste complaints and enforcement against the offences of littering, dog fouling, fly tipping and household duty of care. The WISE waste enforcement team will also complete routine waste inspections on

businesses across the borough and issue notices to businesses who cannot provide a copy of waste transfer notes'.

## **Dog Fouling - the perennial issue!**

With the lighter nights and spring weather we have seen the return of dog fouling on many village streets, play areas and canal towpaths. There are also lazy dog owners who seem to think village residents are 'Dog Poo fairies' and will pick up their pretty poo bags – pink purple, yellow, white and green, decorating hedge rows, walls and trees. Leaving them is just further litter in the countryside and falls under the WISE enforcement contract.

**BAG IT, TIE IT, BIN IT!**

## **Bingham Arena**

As Mayor, I opened the Bingham Leisure centre. It is a wonderful purpose built amenity, with great gym facilities, dance studios, and pool providing lessons, lane swimming and public sessions. There is a very well equipped community hall with stage and lighting plus projection facilities and fully equipped kitchen.

I can't wait to see a school play or concert there. All the infrastructure is directed towards low carbon impact and energy conservation.

There is also an enterprise zone offering fully serviced offices with a rolling 6 monthly rental scheme. If you are looking to open a business this is the place to be. Rushcliffe have done a wonderful job in very difficult times, during and following Covid.

## **Wishing you a Happy Easter**

**Cllr Tina Combella**

**[Cllr.tcombella@rushcliffe.gov.uk](mailto:Cllr.tcombella@rushcliffe.gov.uk)**



**Craig Hammond**

**Mayor of Rushcliffe's  
Charity Q&A  
with local  
sporting heroes,  
supper and auction  
Tuesday April 18  
7pm**

**John McGovern**

**David Clarke**

**Steven Mullaney**

**Perfect for football, rugby, cricket and ice hockey fans!  
£35 per ticket, email [mayor@rushcliffe.gov.uk](mailto:mayor@rushcliffe.gov.uk)  
Nottingham Rugby Club  
The Hook, Lady Bay,  
West Bridgford  
NG2 5BA**

## Calling all Knitters!

The Mayor of Rushcliffe is calling knitters to create some Easter chicks to be distributed to vulnerable families across Rushcliffe.

An appeal to the knitters in Rushcliffe again to knit yellow chicks for Easter which will be distributed via the food bank in West Bridgford for needy families with children in their food parcels.

There is a pattern at [www.pompomemporium.com](http://www.pompomemporium.com) but any chick pattern which takes a small chocolate egg would be good. The eggs are being donated by Morrisons and from my fund.





# Bespoke Care

## in the heart of Widmerpool

The people who live at Belvoir Vale Care Home enjoy comfort with personalised care, fresh seasonal dining options and a varied activities and social programme all in a home-from-home environment.

Speak to our friendly team today to find out more or arrange a visit: **01949 222475**



1 March 2022

We're proud to be rated **9.7 on carehome.co.uk**

\*10 March 23

**Belvoir Vale Care Home**  
Old Melton Road,  
Widmerpool, NG12 5QL

Tel: 01949 222475

Email: [belvoir.vale@mmcg.co.uk](mailto:belvoir.vale@mmcg.co.uk)



**Belvoir Vale**  
Care Home  
Maria Mallaband



Find us on Facebook

[www.mmcgcarehomes.co.uk](http://www.mmcgcarehomes.co.uk)

Residential Care | Dementia Care | Respite Care and Short Breaks

# Easter Eggs



These days Easter eggs come in all shapes and sizes, but where did the first chocolate egg come from and where did this tradition begin?

The first chocolate Easter egg in the UK was introduced in 1873 by the family-owned company, Fry's. The founder, Joseph Fry, started out selling drinking chocolate in the 1750s and his grandsons created the first chocolate bars in the 1860s. Fry's particular achievement at this time was their chocolate Cream Bar, a product that is still sold today.

It was in Easter 1873, that Fry's would create the first chocolate egg. Traditionally, at Easter, people would give each other chicken's eggs which had been hard boiled and painted bright colours (that's where the tradition of decorating eggs comes from). Fry's took this tradition and put their own spin on it, and so the first chocolate Easter eggs were introduced in this country. Fry's competitors quickly caught on and copied with Cadbury's making their own chocolate Easter eggs two years later.

Around the world, the likes of France and Germany had been making chocolate eggs for many years before the UK, but these eggs had been made from solid chocolate. Fry's had been the first to figure out how to use moulds and make hollow eggs. This had been achieved through the Fry family's innovations in making chocolate by mixing cocoa fat with cocoa powder and sugar. This made a smooth paste which could be poured into egg moulds.

The earliest chocolate eggs were also designed with the well-known 'crocodile' design in order to hide any cracks or other imperfections.

As chocolate-making continued to progress, other chocolate shaped treats started to appear, including those shaped like animals.

Fry's were successful as a confectionary company, until they were taken over by Cadbury's in 1935. Easter eggs bearing the Fry's name are still being sold for Easter, carrying on a tradition that has lasted 147 years.





# Highways Reporting Hub



If you have any concerns on the following matters, did you know they can all, be reported on line at the NCC Highways Reporting hub using the link below?

<https://www.nottinghamshire.gov.uk/transport/roads/highways-hub>

This will then generate an enquiry on their system and will be forwarded directly to the relevant Officer.

**Potholes**

**Faulty streetlights**

**Grass cutting schedules**

**Problematic trees & hedges**

**Road or pavement concerns**

**Street signs**

**Road markings**

**Signposts**

**Highways obstruction**

Plus many more services available.....

**For emergencies please phone: 0300 500 80 80**

# Langar-cum-Barnstone Village Hall

## (Registered Charity No 522237)

### **‘We Can Do This!’ Campaign**

We thank those residents and businesses that have already donated to our ‘We Can Do This!’ campaign to raise funds to support the re-build of the hall.

The build programme is progressing well and is reported elsewhere in this issue. We are now at the stage of finalising our ideas for the fit-out of the interior of the hall. We have exciting plans for a demountable stage and associated lighting, plus storage shelving, noticeboards, local history display area, etc. These elements fall outside the build plan and need separate funding. Which is where our ‘We Can Do This!’ campaign comes in.



Through our JustGiving appeal which can be accessed at

<https://www.justgiving.com/campaign/langar-cum-barnstone-village-hall>

or by scanning the QR-code:



By online banking, cheque, or cash. Please contact our Parish Clerk for details.

Please direct any queries about the items in this report to the Parish Clerk in the first instance:

(E: [langarbarnstoneclerk@gmail.com](mailto:langarbarnstoneclerk@gmail.com) or T: 07984075016)

Langar cum Barnstone Parish Council  
Corporate Sole Trustee of Langar-cum-Barnstone Village Hall