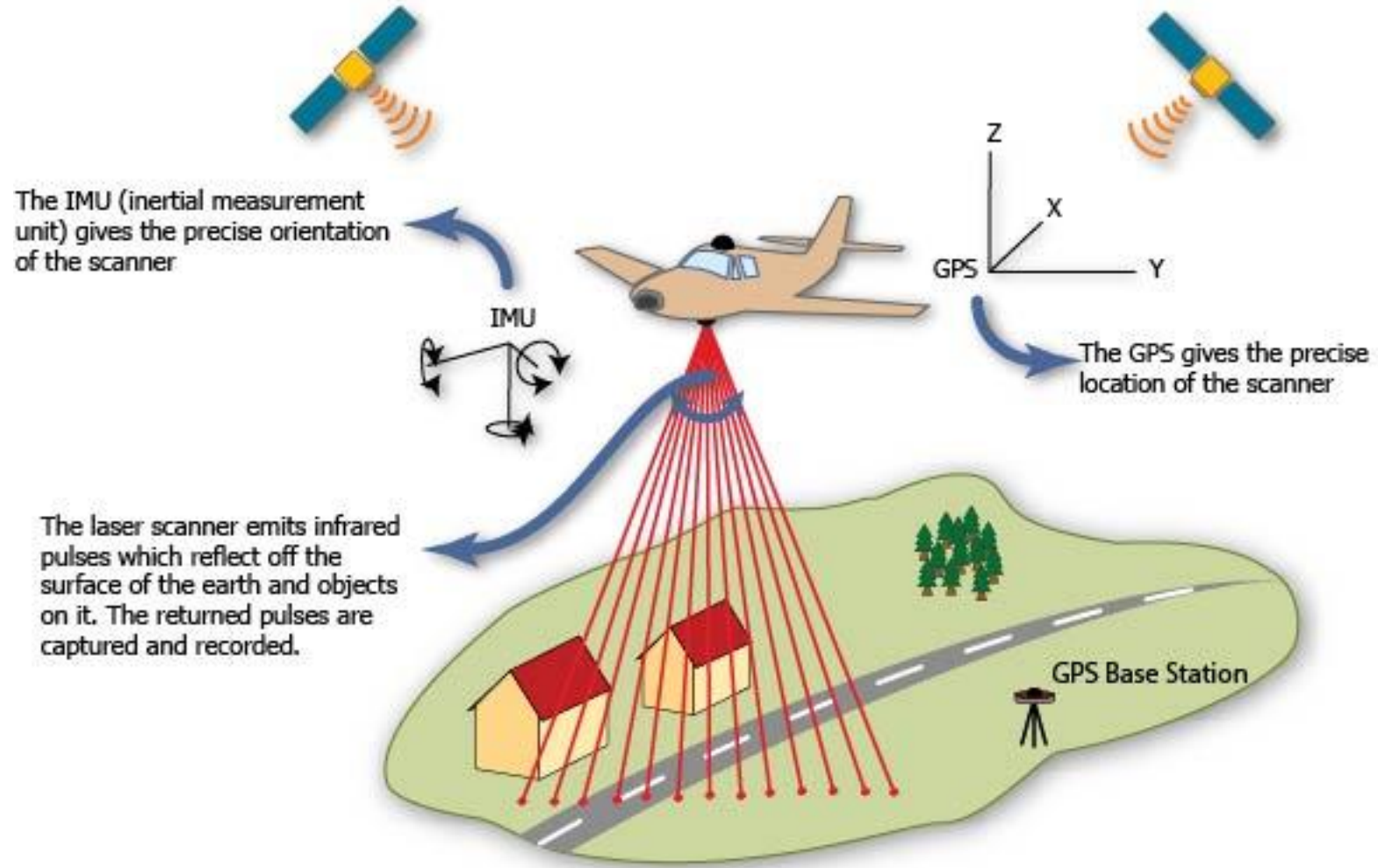
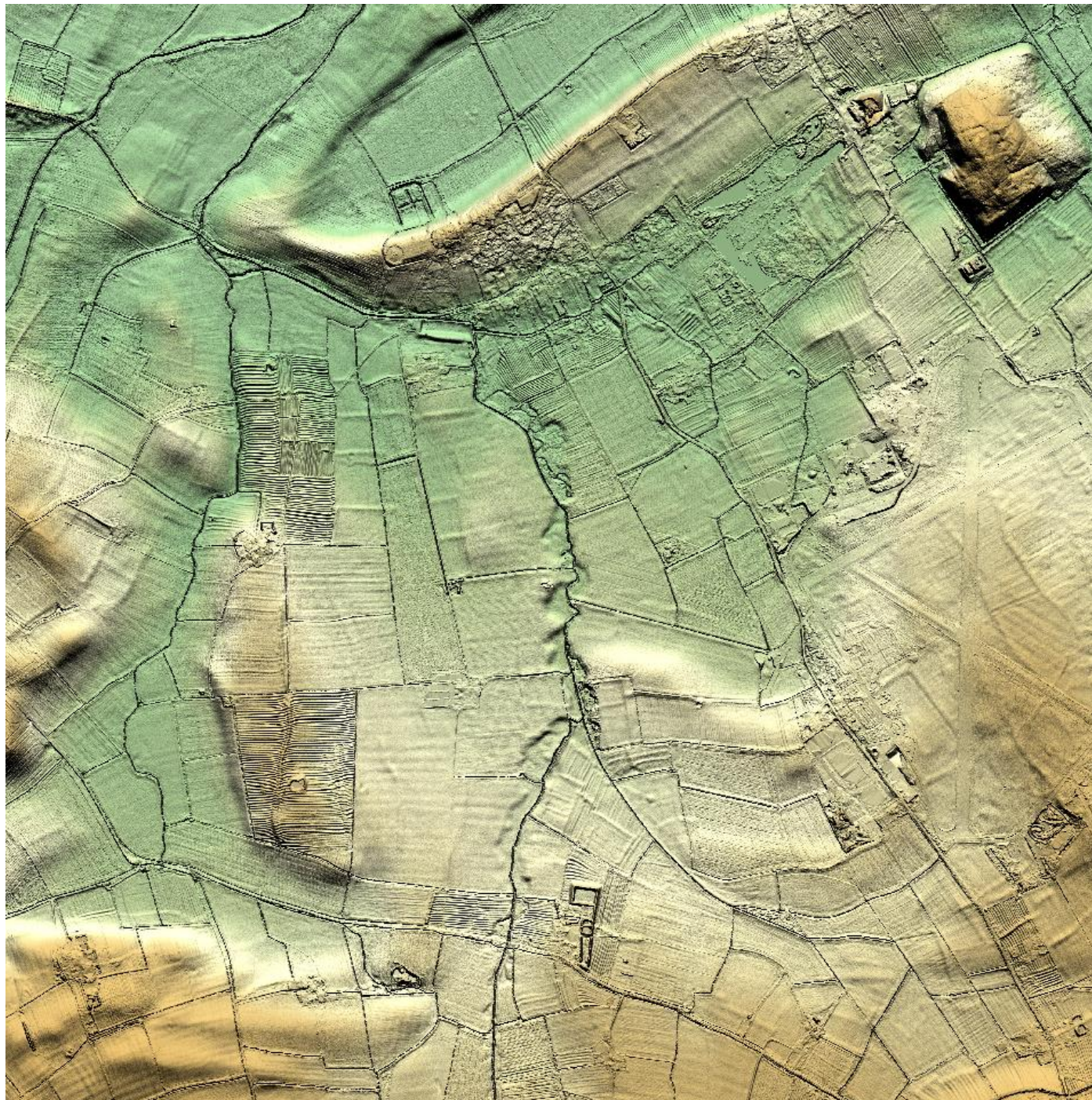


LIDAR & Aerial Photographs

Langar, Barnstone & District

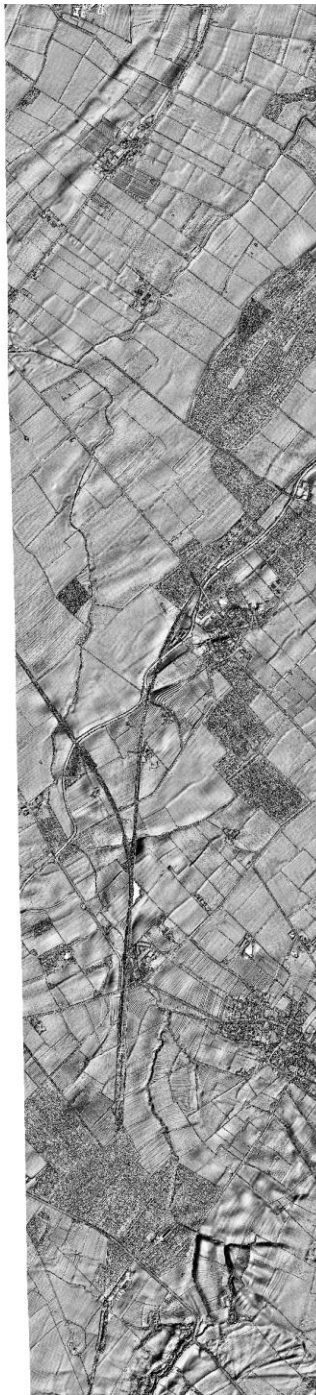
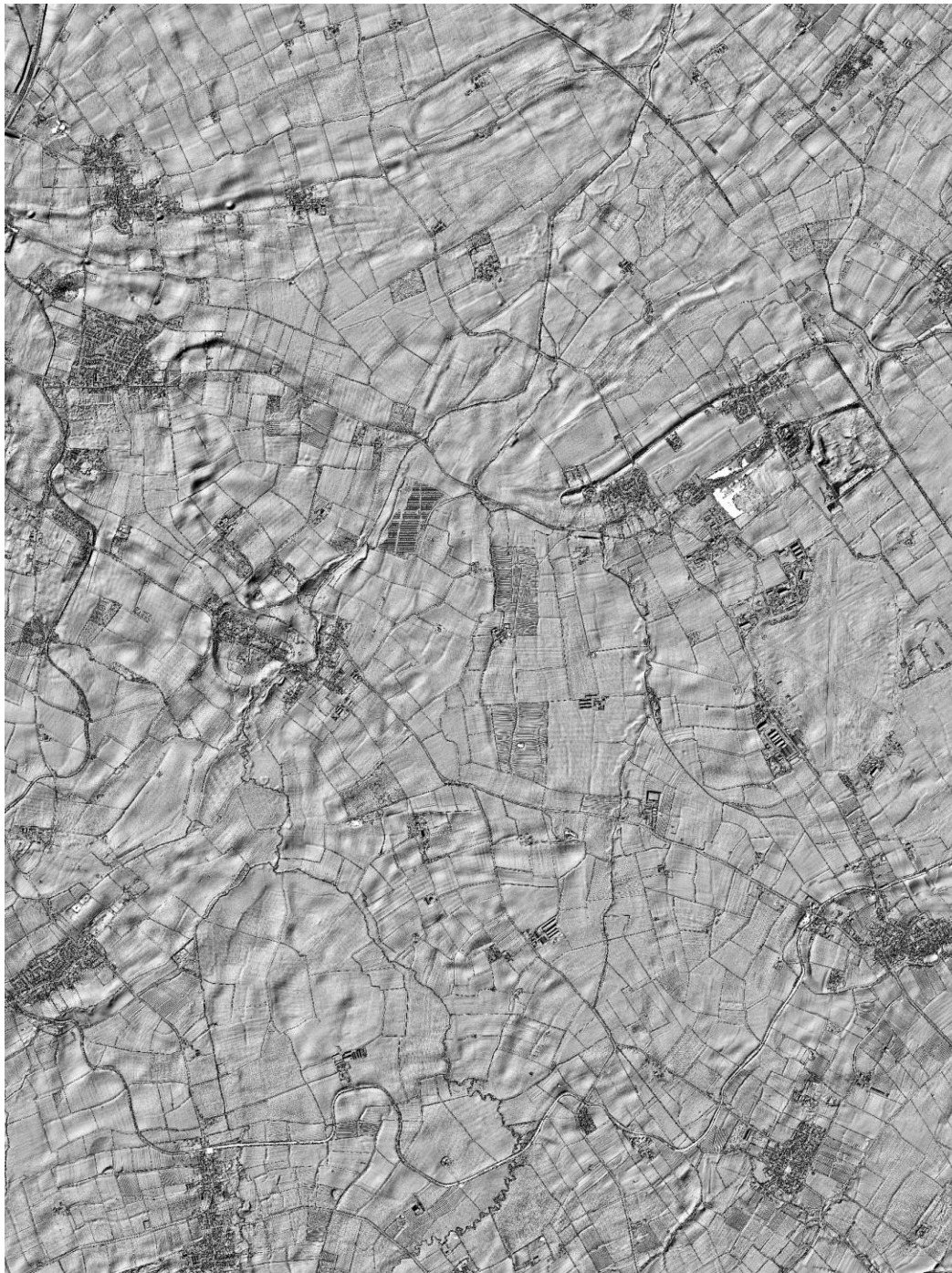




Langar & Barnstone LIDAR Terrain
Model illuminated from the north



Langar & Barnstone LIDAR Surface
Model illuminated from the south
east



Langar, Barnstone & District LIDAR
Surface Model illuminated from the
south east



West Park Field, Langar LIDAR
Surface Model illuminated
from the north



Google Earth
Photograph of
West Park Field
in Summer 2018



Langar in the 1950's looking East



Cropwell Road Footpath flooded showing site of depression on LIDAR, October 2015



Flood water following relict course of the Stroomdyke, October 2015



Crop of Aerial
Photograph taken on
18 April 1944

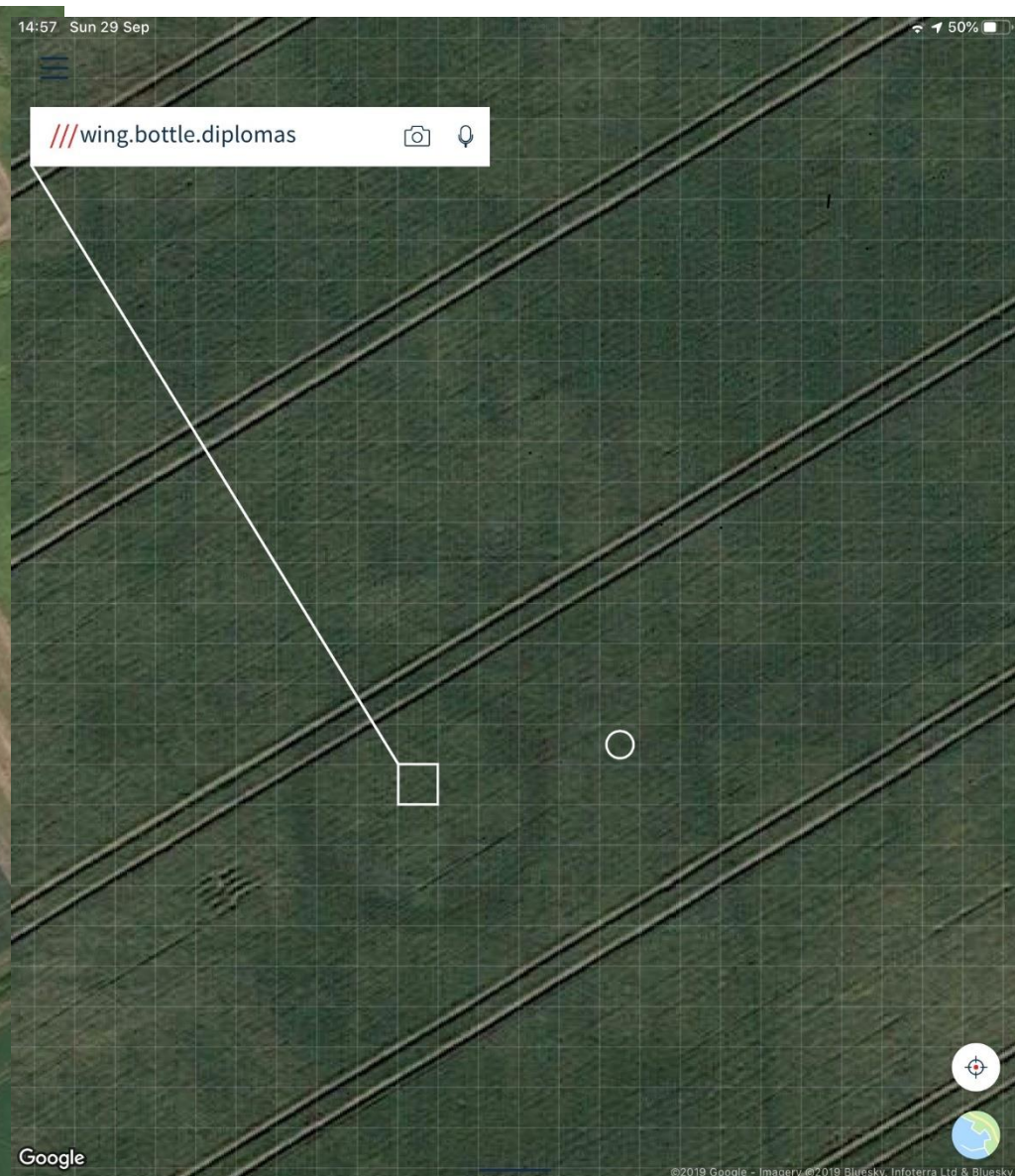


West Park Field, 1 October 2019



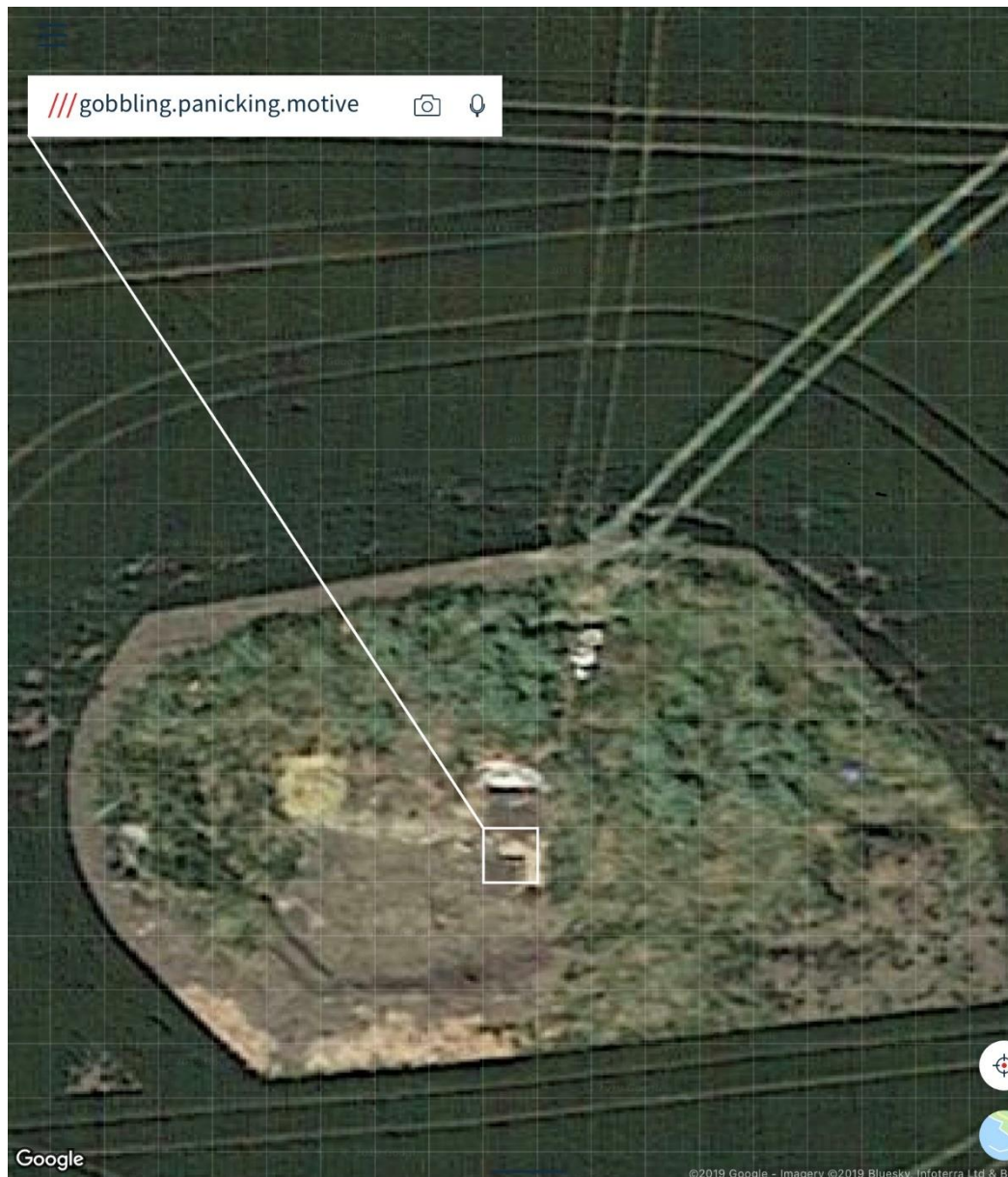
Wiverton Hall LIDAR





- Navigate here
- Share
- Save to a list

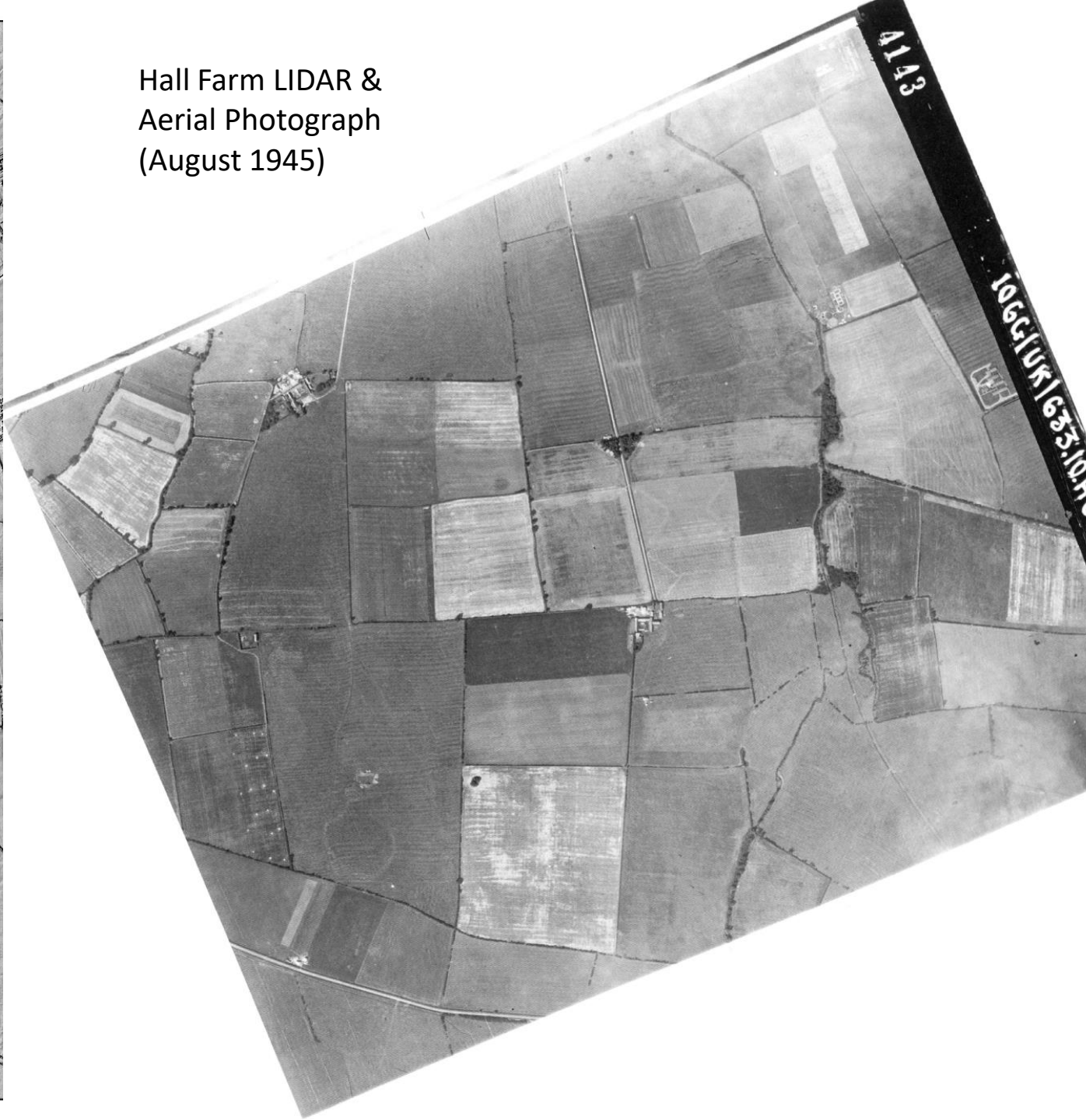
Wiverton Hall Google Earth Aerial
Photograph & What3words Grid



St Ethelburga's , Summer 2018
screenshot from what3words app
showing location with 3m square grid
overlain and what3words cell description



Hall Farm LIDAR &
Aerial Photograph
(August 1945)





5039

US 7PH GP LOC 283 18-4-44 F24



Barnstone Google Earth
Photograph Summer 2018 Iron
Age Farmstead?



Google Earth Photograph of Fields between Wiverton Hall & Smite Hill Farm



Temporary Roman Camp near Cawfields Mile Castle 42, Hadrian's Wall